

Part Number: PRA-TP-002 (Alternate Part No: S1888)
Threaded Proximity Switch - Normally Open Contacts - Suggested Magnet: PRM
Product Data Sheet

PICTURE



✓ **RoHS Compliant**

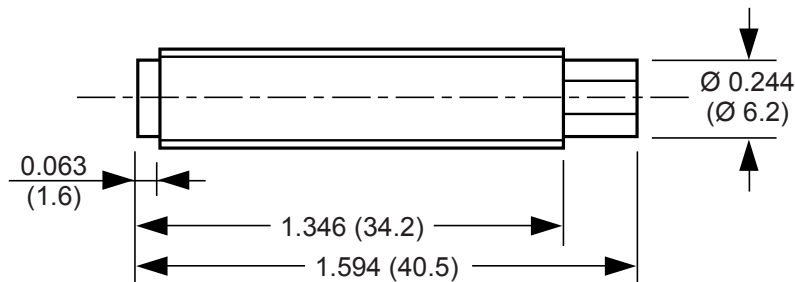
APPLICATIONS

- Position and limit sensing.
- Linear actuators.
- Security system switch.
- Door switch.

OPTIONS

- Also available in M6 and M12
- Custom cable lengths, strip lengths, cable types, terminations.
- If you do not see what you need, just ask, as there is a strong possibility we can do it!
- Device is intended to be mounted in an enclosure under UL recognition.

DIMENSIONS



Drawings not to scale.
 All dimensions in inches (mm) nominal.

SPECIFICATION

Contact Form / Style	Normally Open
Switching Capacity (Resistive)	10 W/VA Max.
Switching Voltage	400 VAC Max.
Switching Current	0.5 A Max.
Carry Current	1.0 A Max.
Breakdown Voltage	500 VDC Min.
Operate Time Max. ms	1.0
Bounce Time Max. ms	0.2
Release Time Max. ms	0.05
Resonant Frequency Typ Hz	5000
Operating Frequency Max Hz	200
Vibration (10-1000Hz) g	35
Contact Resistance	150 mOhms Max.
Shock (11ms) g	50
Operating Temperature Range	-40°C to +125°C
Capacitance Typ pF	0.7
Case Material	Black Acetal
Cable	2 x Round 0.2mm ² PVC Covered Black

As part of the company policy of continued product improvement, specifications may change without notice. Our sales office will be pleased to help you with the latest information on this product range and the details of our full design and manufacturing service. All products are supplied to our standard conditions of sale unless otherwise agreed in writing.

Phone: (1) 973 777 6900

www.comus-intl.com

Fax: (1) 973 777 8405

Belgium: + 32 (0)12 390400 - Comus Europe Ltd (Assemblech) UK: +44 (0) 1255 862236 - Germany: +49 (0)911 923 15 943 - Netherlands: +31(0)45 54 39 345 - India: +(91) (44) 43219090

©2015 Copyright Comus International, 454 Allwood Road, Clifton NJ 07012, USA